

Artist: JOHN MELVILLE

Title: Portrait of Betty

Signed and dated: 1936

Media: Oil on canvas

Size: 29.5 x 39.5

Framed

Comments:



Artist: JOHN MELVILLE

Title: Path Through the Woods

Signed and dated 1961

Media: Watercolour on paper

Size: 58 x 43

Framed

Comments:



Artist: JOHN MELVILLE

Title: Babbacombe Road, Torquay

Signed and dated 1973

Media: Watercolour on paper

Size: 30 x 45

Framed

Comments:



Artist: JOHN MELVILLE

Title: Sunset over Red Mountain

Signed and dated 1966

Media: Watercolour on paper

Size: 58 x 38

Framed

Comments:



Artist: JOHN MELVILLE

Title: Rocky Landscape

Signed and dated 1972

Media: Watercolour on paper

Size: 61 x 36

Framed

Comments:



Artist: JOHN MELVILLE

Title: Flaming Tree

Signed and dated 1972

Media: Watercolour on paper

Size: 58 x 40

Framed

Comments:





Artist: JOHN MELVILLE

Title: Cliff Face

Signed and dated circa 1961

Media: Watercolour on paper

Size: 38 x 51

Framed

Comments:



Artist: JOHN MELVILLE

Title: The Storm

Signed and dated 1961

Media: Watercolour on paper

Size: 59 x 38

Framed

Comments:



Artist: JOHN MELVILLE

Title: Surrealist Stage

Signed and dated 1934

Media: Watercolour on paper

Size: 45 x 38

Framed

Comments:



Artist: JOHN MELVILLE

Title: Three Women on the Beach

Not signed and dated circa 1935

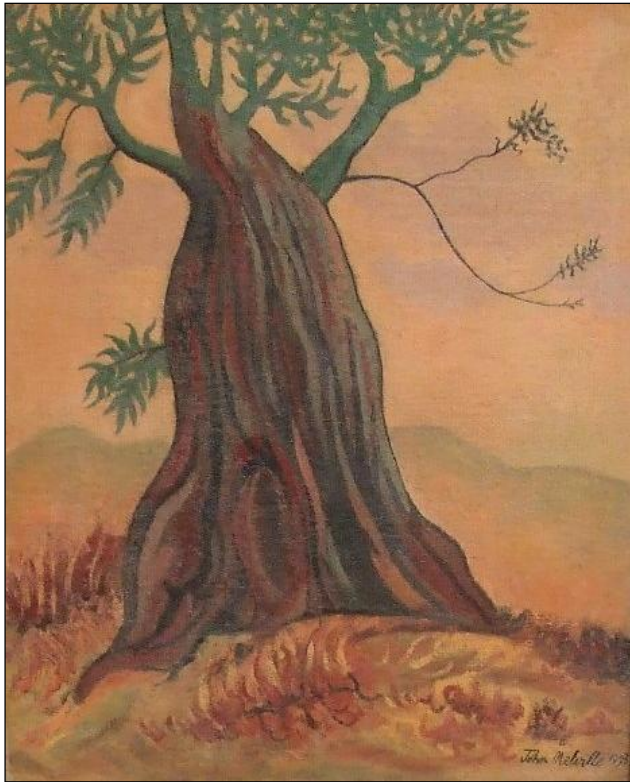
Media: Oil on board

Size: 75 x 100

Framed

Comments:





Artist: JOHN MELVILLE

Title: Tree of Hope

Signed and dated 1973

Media: Oil on Hessian

Size: 55 x 68

Framed

Comments:



Artist: JOHN MELVILLE

Title: The Tease

Signed and dated 1967

Media: Oil on canvas

Size: 59 x 86

Framed

Comments:



Artist: JOHN MELVILLE

Title: The Poet

Signed and dated 1960

Media: Oil on canvas

Size: 102 x 102cm

Framed

Comments:



Artist: JOHN MELVILLE

Title: Betty Reading

Signed and dated 1952

Media: Oil on canvas

Size: 91 x 132

Framed

Comments:





Artist: JOHN MELVILLE

Title: Contentment

Signed and dated circa 1955

Media: Oil on board,

Size: 109 x 87

Framed

Comments:



Artist: JOHN MELVILLE

Title: Cosmic View

Signed and dated 1967

Media: Oil on canvas

Size: 99 x 138

Framed

Comments:





Artist: JOHN MELVILLE

Title: Dissolving Forms

Signed and dated 1958

Media: Oil on board

Size: 120 x 90

Framed

Comments:



Artist: JOHN MELVILLE

Title: Mother Earth

Signed and dated 1967

Media: Oil on canvas

Size: 134 x 96

Framed

Comments:



Artist: JOHN MELVILLE

Title: A Grain of the Absolute

Signed and dated 1967

Media: Oil on canvas

Size: 135 x 97

Framed

Comments: Verse to back